

4CH DVR HDD PCVIEWER

User Manual

	INDEX	P
1	Introduction	2
2	Installation/System Requirement	2
2.1	Hardware Installation	2
2.2	Software Installation	2
2.3	Recommendation Hardware/Software	2
3	Execution	2
4	View & Backup	3
4.1	User Interface	3
4.2	Functions	4
4.2.1	HDD Select Button	4
4.2.2	Valid Stream Region Indication	4
4.2.3	Slider Bar Zooming Button	4
4.2.4	Playback	4
4.2.5	Channel Selection	4
4.2.6	Capture Current Stream Button (BMP)	4
4.2.7	Capture Current Stream Button (MYS)	4
4.2.8	Play Capture Stream Button	4
4.2.9	Volume Control.	4
4.2.10	Direct Access	4
5	MYS Player	5
5.1	User Interface	5
5.2	Functions	6
5.2.1	File Open	6
5.2.2	Playback	6
5.2.3	Channel Selection	6
5.2.4	Capture Current Stream Button (BMP)	6
5.2.5	Volume Control	6
5.2.6	Position Slider Bar	6
5.2.7	MYS File Info. Display Button	6
6	Application Setting	7
6.1	User Interface	7
6.2	Functions	7
6.2.1	Default Video Mode Related Setting	7
6.2.2	Change BMP File Saving Directory	7
6.2.3	Change MYS File Saving Directory	7
6.2.4	Application Closing	7
6.2.5	Change No Hardware Color Conversion Support Notification	7
6.2.6	Change Invalid Stream Loading Notification	7

1 Introduction

This Operation Manual for 4CH PCVIEWER. The application will show you stream image stored in the HDD which was previously formatted and recorded from.

If any DVR formatted HDD is connected to your PC, the application will automatically detect the HDD and show the recorded stream. You can also save the current screen to a BMP file, and save the current stream to a stream file [the file extension for the stream file is "MYS"].

The application consists of two functional modules:

DVR HDD PC Viewer	Shows stream stored in the HDD directly.
MYS File Player	Plays captured stream file.

2 Installation/System Requirement

2.1 Hardware Installation

As stated above, the application shows stream which is stored in HDD from DVR. Before installing and executing the application, make sure that you connected HDD to the IDE cable of your PC directly, or via USB HDD adaptor.

2.2 Software Installation

Make sure that the OS of your PC is Windows 2000 or above. Otherwise, the application will not operate properly.

The application is just one execution file. So copy it to any directory you want.

2.3 Recommendation Hardware/Software

Microsoft Windows 2000 or Later (XP, 2003).

CPU 1.0 GHz or Higher.

RAM 256 MByte or greater.

Operating System

Microsoft Windows 2000/XP or later.

DirectX 7.0 or later.

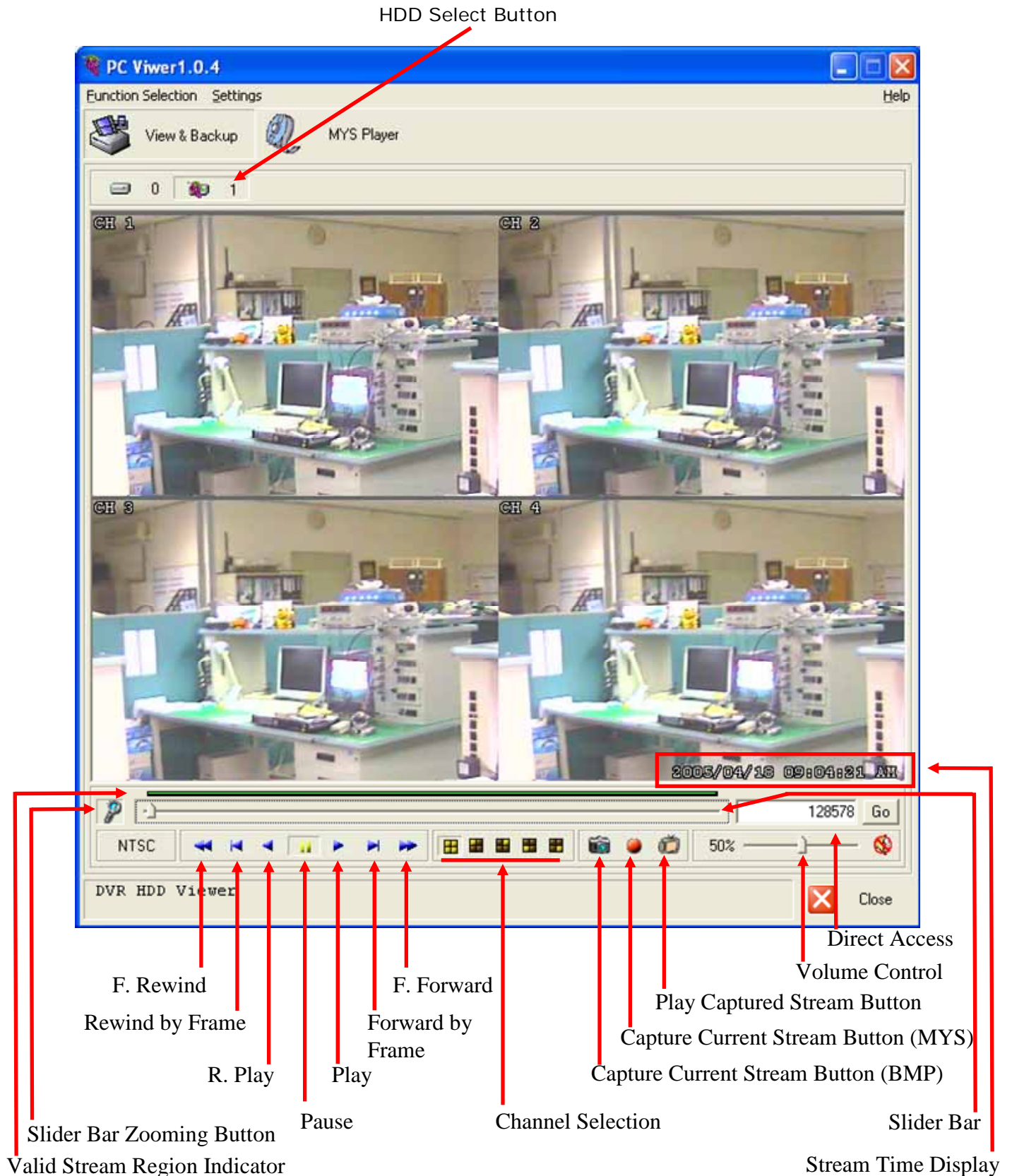
3 Execution

Please double click the execution file. The application first detects physical HDDs installed at your PC and search for HDD among them. This process may take up to 1 minute.

4 View & Backup

4.1 User Interface

The default page of the application is DVR HDD PC Viewer. The user interface as below.



4.2 Functions

4.2.1 HDD Select Button

Once the application detects one or more HDDs, it automatically selects the first HDD. You can select any HDD [the HDDs with PCVIEWER marked]. However, you cannot select the normal HDD, which may be Windows-formatted one.

4.2.2 Valid Stream Region Indication

Once a HDD is selected, the application detects valid stream region where valid video stream resides. The valid stream region is marked as green within the Valid Stream Region Indicator.

4.2.3 Slider Bar Zooming Button

If the Valid Stream Region is relatively too small, you may have difficulty to navigate within it. In this case, you can enlarge (magnify) the Valid Stream Region by clicking Slider Bar Zooming Button.

4.2.4 Playback

Once a HDD is selected, the application automatically displays first screen recorded at the very beginning of it. Then, you can see stream at anywhere within the valid stream reason.

4.2.5 Channel Selection

The default screen display channel setting is ALL CHANNEL, which shows all four channel (if the stream has 4 channel streams) at the same time. If you want to see a channel only or enlarge one channel, press any channel button you want.

4.2.6 Capture Current Stream Button (BMP)

If you want to capture, or backup, current screen, press Capture Current Screen button. Then it will capture the current screen and saves it as BMP file.

4.2.7 Capture Current Stream Button (MYS)

If you want to capture, or backup, current stream, press Capture Current Stream button. Then it will record the stream you want. It will create .MYS file, whose format is Vineyard Technologies' proprietary stream file format. You can play the recorded file using MYS file player.

4.2.8 Play Capture Stream Button

MYS Player mode.

4.2.9 Volume Control

You can enable/disable audio sounding by clicking "MUTE" button and adjust volume by adjusting Volume slider bar.

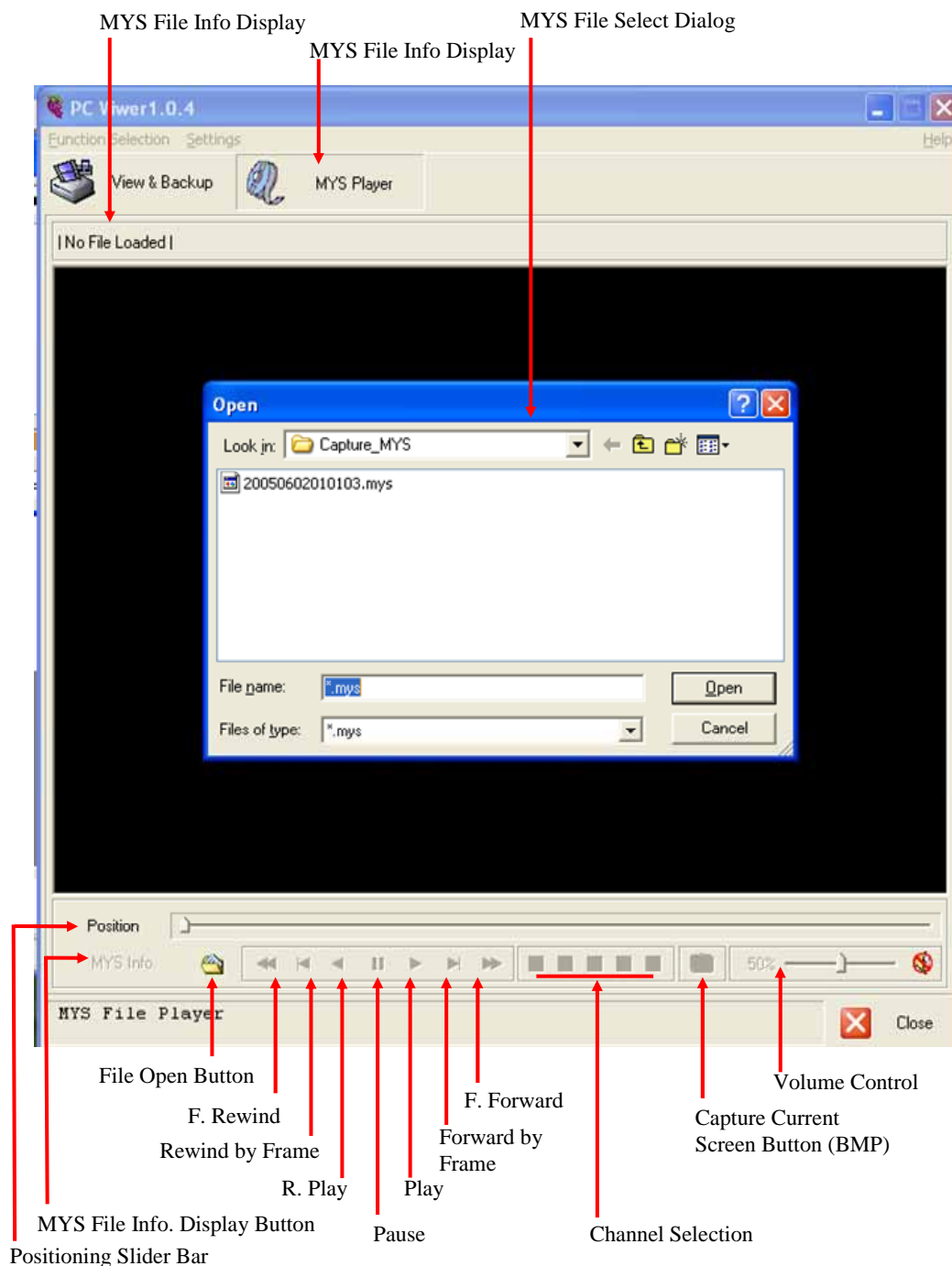
4.2.10 Direct Access

If the stream stored in a HDD is quite long, you may have difficulty to find the exact scene you want to see. When you find a scene you would like to show your friend or report to polis officer later, please remember the number in the Direct Access Input edit box, so that you can go there directly by entering the number in the edit box and pressing "GO" button besides it.

5 MYS Player

5.1 User Interface

The default page of the application is DVR HDD PCVIEWER. The user interface as below.



5.2 Functions

5.2.1 File Open

You can open MYS file by clicking File Open Button.

5.2.2 Playback

Once a HDD is selected, the application automatically displays first screen recorded at the very beginning of it. Then, you can see stream at anywhere within the valid stream reason.

5.2.3 Channel Selection

The default screen display channel setting is ALL CHANNEL, which shows all four channel (if the stream has 4 channel streams) at the same time. If you want to see only one channel as full screen, press channel button.

5.2.4 Capture Current Stream Button (BMP)

If you want to capture, or backup, current screen, press Capture Current Screen button. Then it will capture the current screen and saves it as BMP file.

5.2.5 Volume Control

You can enable/disable audio sounding by clicking "MUTE" button and adjust volume by adjusting Volume slider bar.

5.2.6 Position Slider Bar

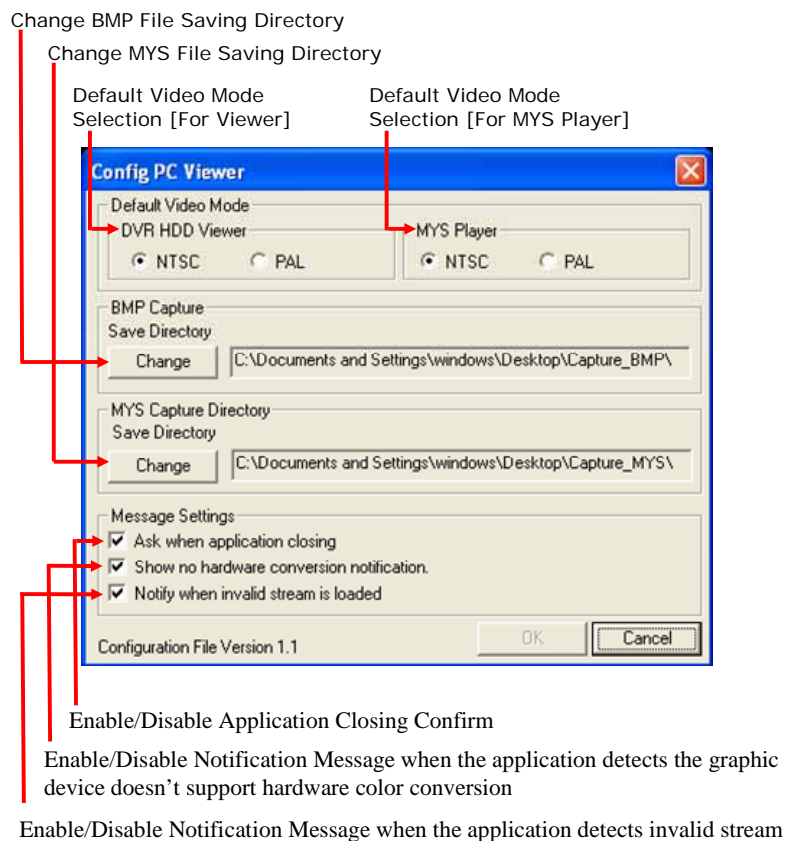
Slide image position directly.

5.2.7 MYS File Info. Display Button

Showing File Name, Video Mode, File Size, and Frame Count & Current Position at upper left corner.

6 Application Setting

6.1 User Interface



6.2 Functions

6.2.1 Default Video Mode Related Setting

You can specify choose the default video standard.

1. NTSC/PAL Setting for HDD PCVIEWER
2. NTSC/PAL Setting for MYS Player

6.2.2 Change BMP File Saving Directory

Press "Change" Button to change the directory where the new BMP capture file will be stored.

6.2.3 Change MYS File Saving Directory

Press "Change" button to change the directory where the new MYS stream file will be stored.

6.2.4 Application Closing

Enable/Disable the confirm message box for application closing.

6.2.5 Change No Hardware Color Conversion Support Notification

Enable/Disable the notification message when the application detects the graphic device installed is not supporting hardware-aided YUV to RGB color conversion.

6.2.6 Change Invalid Stream Loading Notification

Enable/Disable the warning message when the application [HDD PC Viewer] loads invalid stream data from a hard disk.