

## Table of Contents

---

<b>Preface.....</b>	<b>1</b>
<b>Installation for Windows OS.....</b>	<b>4</b>
<b>Windows 98.....</b>	<b>4</b>
<b>Windows ME.....</b>	<b>5</b>
<b>Windows 2000.....</b>	<b>5</b>
<b>Windows XP.....</b>	<b>6</b>
<b>Uninstallation.....</b>	<b>6</b>
<b>Installation for Mac OS.....</b>	<b>7</b>
<b>Mac OS9.....</b>	<b>7</b>
<b>Uninstallation for Mac OS9.....</b>	<b>9</b>
<b>Mac OSX.....</b>	<b>10</b>
<b>Uninstallation for Mac OSX.....</b>	<b>12</b>

# dslVigor

## Quick Start Guide

---

### **Copyright Declarations**

Copyright© 2002 DrayTek Corporation. All rights reserved. This publication contains information that is protected by copyright. No part may be reproduced, transmitted, transcribed, stored in a retrieval system, or translated into any language without written permission from the copyright holders.

### **Trademarks**

Microsoft is a registered trademark of Microsoft Corp. Windows, Windows 95, 98, 98SE, Me, NT, XP and 2000 are trademarks of Microsoft Corp. Other trademarks and registered trademarks of products referred to in this manual are the properties of their respective owner.

### **Safety Instructions**

- . Please read the installation guide thoroughly before you set up the modem.
- . The modem is a complicated electronic unit that may be repaired only by authorized and qualified personnel.
- . Do not try to open or repair the modem yourself. Do not place the modem in a damp or humid place, e.g. a bathroom.
- . The modem should be used in a sheltered area, within a temperature range of +5 to +40 Celsius.
- . Do not expose the modem to direct sunlight or other heat sources. The housing and electronic components may be damaged by direct sunlight or heat sources.
- . Keep the packaging out of reach of children.
- . When you want to dispose of the modem, please follow local regulations on conservation of the environment.

**Warranty**

We warrant to the original end user (purchaser) that the modem will be free from any defects in workmanship or materials for a period of three (3) years from the date of purchase from the dealer. Please keep your purchase receipt in a safe place as it serves as proof of date of purchase.

During the warranty period, and upon proof of purchase, should the product have indications of failure due to faulty workmanship and/or materials, we will, at our discretion, repair or replace the defective products or components, without charge for either parts or labor, to whatever extent we deem necessary to restore the product to proper operating condition. Any replacement will consist of a new or re-manufactured functionally equivalent product of equal value, and will be offered solely at our discretion. This warranty will not apply if the product is modified, misused, tampered with, damaged by an act of God, or subjected to abnormal working conditions.

The warranty does not cover the bundled or licensed software of other vendors. Defects which do not significantly affect the usability of the product will not be covered by the warranty.

We reserve the right to revise the manual and online documentation and to make changes from time to time in the contents hereof without obligation to notify any person of such revision or changes.

**European Community  
Declarations**

Hereby, DrayTek Corporation declares that the modem is in compliance with the essential requirements and other relevant provisions of R&TTE Directive 99/5/EC.

**Be A Registered Owner**

Web registration is preferred. You can register your modem via <http://www.draytek.com.tw>. Alternatively, fill in the registration card and mail to the address found on the reverse side of the card.

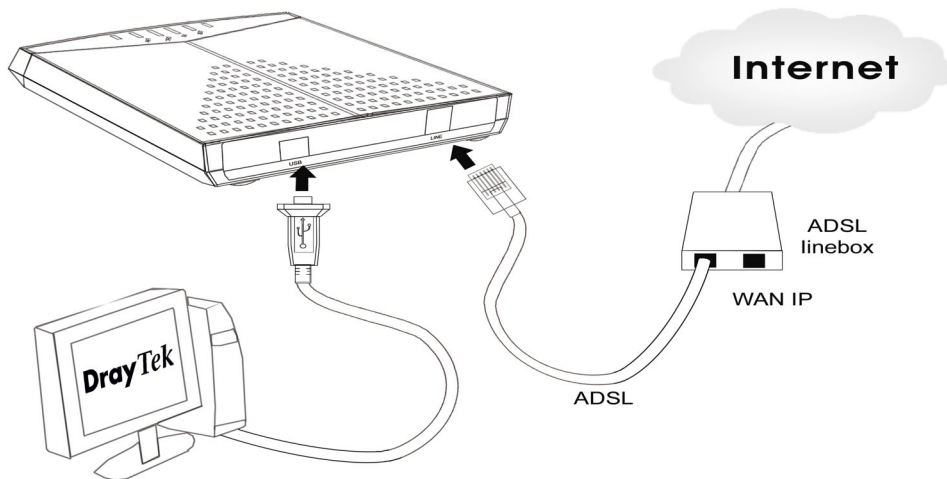
**Firmware & Tools  
Updates**

Due to the continuous evolution of DrayTek ADSL and modem technology, all modems will be regularly upgraded. Please consult the DrayTek web site for more information on newest driver, tools and documents.

[http:// www.draytek.com.tw](http://www.draytek.com.tw)

## Installation for Windows OS

Please plug USB cable to USB port on USB modem as following:



### Windows 98

1. Please insert the driver CD supplied when you see the message of **USB Composite Device** and then click **Next**.
2. Select the **Search for the best driver for your device [Recommended]** and click **Next**.
3. Select the **Specify a location** and **Browse** to the driver path and click **Next**.
4. Click **Next** in the next two dialog-boxes.
5. Insert the Windows 98 CD-ROM and click **OK**.
6. Click **Finish** to continue.
7. Click **Yes** to reboot your PC.
8. Click **Next** in the next three dialog-boxes.
9. Select the driver type and enter VPI/VCI value and click **Next**.
10. Select the framing type and click **Next**.
11. If you select PPPoE/PPPoA driver type then select the mode and click **Next**.
12. If you select RFC1483 driver type then enter IP/Subnet mask/ Gateway value and click **Next**.
13. Click **Finish** to continue.
14. Select **Yes** and click **OK** to reboot your PC.
15. Now you can use your ADSL. Enjoy it.

## Windows ME

1. Please insert the driver CD supplied when you see the message of **DynaMiTe USB Modem** and select the **Specify the location of the driver [Advanced]** and click **Next**.
2. Select the **Specify a location** and **Browse** to the driver path and click **Next**.
3. Click **Next** to continue.
4. Click **Finish** to continue.
5. Click **Yes** to reboot your PC.
6. Click **Next** in the next three dialog-boxes.
7. Select the driver type and enter VPI/VCI value and click **Next**.
8. Select the framing type and click **Next**.
9. If you select PPPoE/PPPoA driver type then select the mode and click **Next**.
10. If you select RFC1483 driver type then enter IP/Subnet mask/Gateway value and click **Next**.
11. Click **Finish** to continue.
12. Select **Yes** and click **OK** to reboot your PC.
13. Now you can use your ADSL. Enjoy it.

## Windows 2000

1. Please insert the driver CD supplied when you see the message of **Found New Hardware** and click **Next**.
2. Select the **Search for a suitable driver for my device [recommended]** and click **Next**.
3. Select the **Specify a location** and click **Next**.
4. **Browse** to the driver path and click **OK**.
5. Click **Next** to continue.
6. Click **Yes** to continue.
7. Click **Next** in the next three dialog-boxes.
8. Select the driver type and enter VPI/VCI value and click **Next**.
9. Select the framing type and click **Next**.
10. If you select PPPoE/PPPoA driver type then select the mode and click **Next**.
11. If you select RFC1483 driver type then enter IP/Subnet mask/Gateway value and click **Next**.
12. Click **Finish** to continue.
13. Select **Yes** and click **OK** to reboot your PC.
14. Now you can use your ADSL. Enjoy it.

## Windows XP

1. Please insert the driver CD supplied when you see the message of **DynaMiTe USB Modem** and select the **Install from a list or specify location [Advanced]** and click **Next**.
2. Select the **Include this location in the search** and **Browse** to the driver path and click **Next**.
3. Click **Continue Anyway** to continue.
4. Click **Next** in the next three dialog-boxes.
5. Select the driver type and enter VPI/VCI value and click **Next**.
6. Select the framing type and click **Next**.
7. If you select PPPoE/ PPPoA driver type then select the mode and click **Next**.
8. If you select RFC1483 driver type then enter IP/Subnet mask/ Gateway value and click **Next**.
9. Click **Finish** to continue.
10. Select **Yes** and click **OK** to reboot your PC.
11. Now you can use your ADSL. Enjoy it.

## Uninstallation

### Windows 98

1. Please go to **Start / Programs / ADSL Modem Driver** and double-click on the **Remove ADSL Modem Driver**.
2. Click **Yes** to remove driver.
3. Select **Yes** and click **OK** to reboot your PC.

### Windows ME

1. Please go to **Start / Programs / ADSL Modem Driver** and double-click on the **Remove ADSL Modem Driver**.
2. Click **Yes** to remove driver.
3. Select **Yes** and click **OK** to reboot your PC.

### Windows 2000

1. Please go to **Start / Programs / ADSL Modem Driver** and double-click on the **Remove ADSL Modem Driver**.
2. Click **Yes** to remove driver.
3. Select **Yes** and click **OK** to reboot your PC.

### Windows XP

1. Please go to **Start / All Programs / ADSL Modem Driver** and double-click on the **Remove ADSL Modem Driver**.
2. Click **Yes** to remove driver.
3. Select **Yes** and click **OK** to reboot your PC.

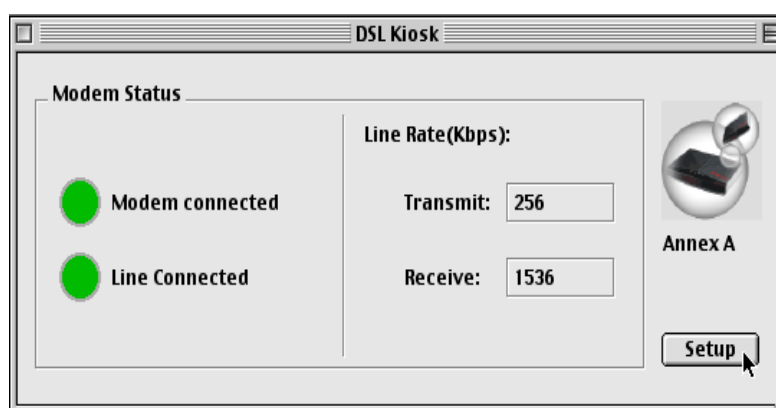
## Installation for Mac OS

### Mac OS9

Launch the **DrayTek DSL Modem Installer** and follow the instruction to install the driver. It requires to restart your computer when the installation is done.

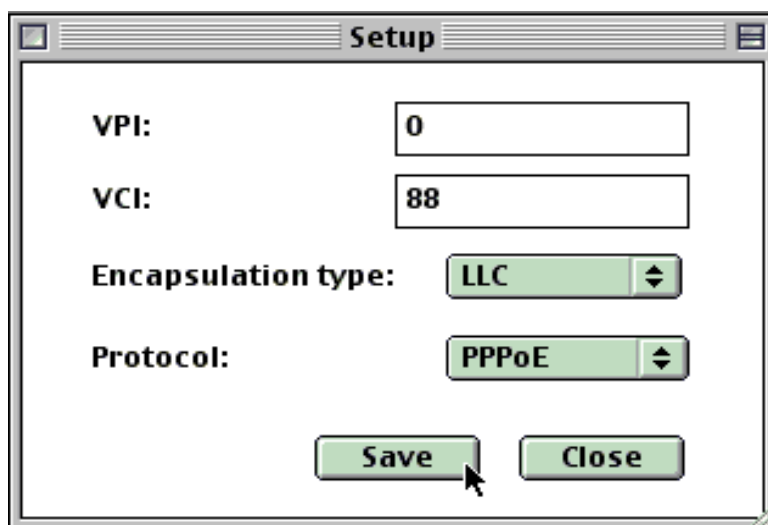
### Setup the USB A DSL modem

1. Launch the **DSL Kiosk** application within your control panel, and click the **setup** button.



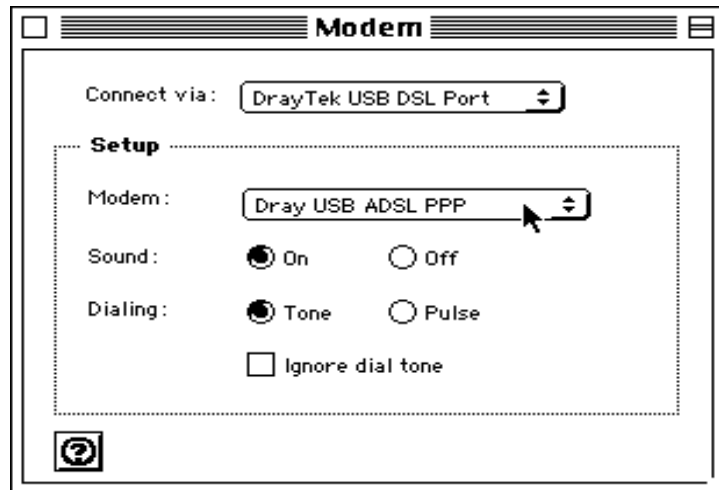
2. Enter the VPI/VCI value, and select the Encapsulation type, protocol (ask your ISP for the correct value). Click **Save** button to save your selection.

*NOTE: You need to connect the USB ADSL modem with your computer to save the value.*

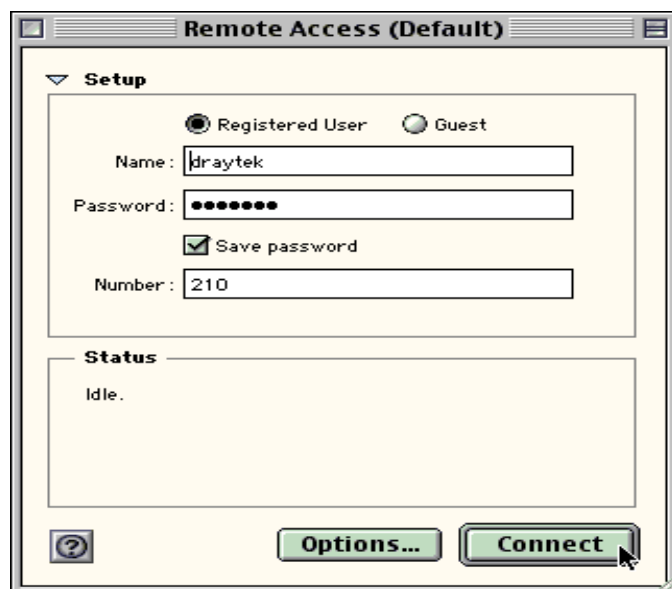




3. Open the “**Control Panels -> Modem**” and select the **connect via:** with **DrayTek USB DSL Port**, and select the Modem script with **Dray USB ADSL PPP** as follows:



4. Open the “**Control Panels -> Remote Access**” and enter the account name and password assigned by your ISP as follow. Enter any number in the **Number** field.



### **Connect to the Internet**

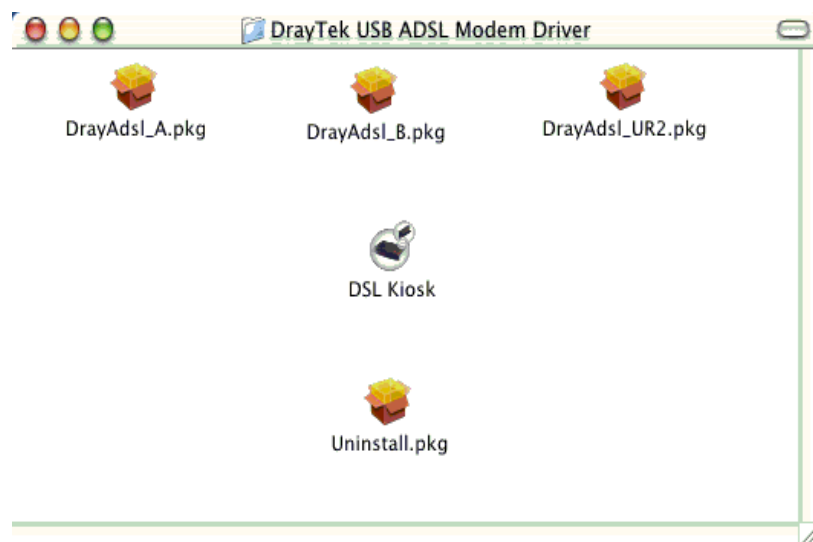
Launch the “ **Control Panels -> Remote Access**” and click the **Connect** button.

### **Uninstallation**

1. Launch the **DrayTek DSL Modem Installer** and select the uninstall option.
2. Check the uninstall package and click **Uninstall** button.

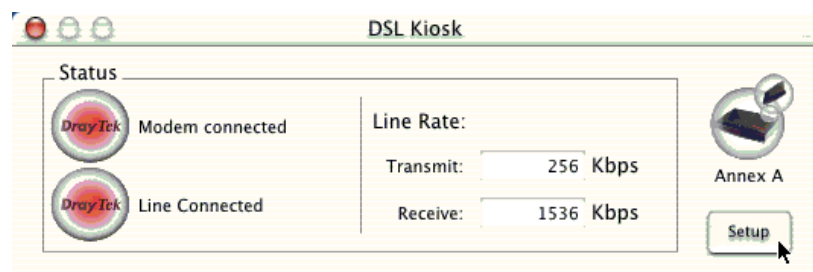
## Mac OSX

1. Select the installer for your modem model (Annex A, Annex B or UR2). Double click to launch the installer and follow the instruction to install the driver. It requires to restart your computer when the installation is done.
2. Copy the **DSL Kiosk** application into your hard drive. This application can display modem status and set up parameters for the USB ADSL modem.



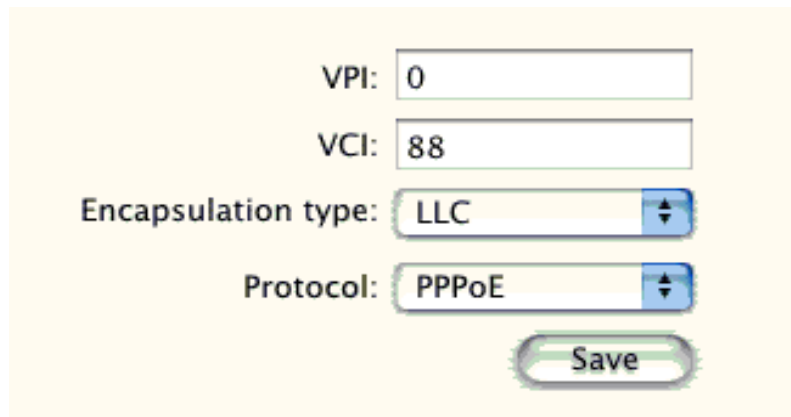
## Setup the USB ADSL modem

1. Launch the **DSL Kiosk** application and click the **setup** button.



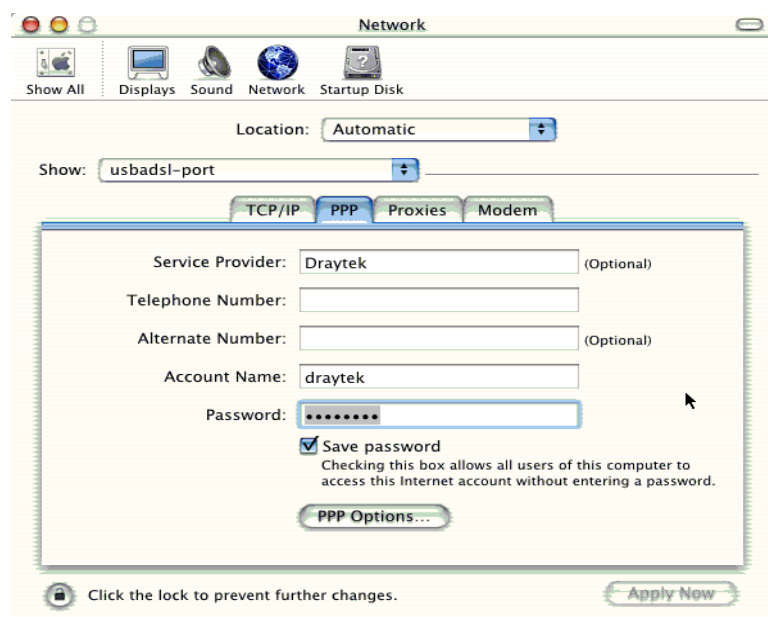
2. Enter the VPI/VCI value, and select the Encapsulation type, protocol. Click **Save** button to save your selection.

*NOTE: You need to connect the USB ADSL modem with your computer to save the value.*



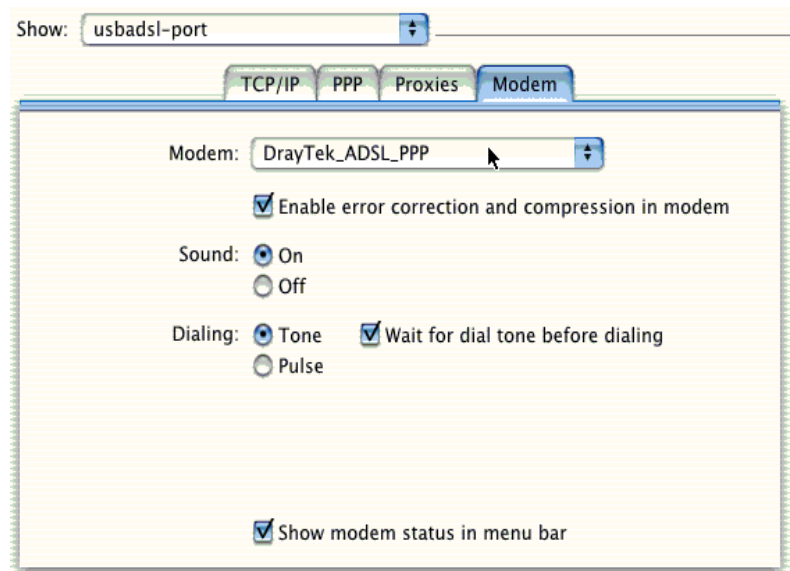
A screenshot of a network configuration window with a yellow background. It contains four input fields: 'VPI:' with the value '0', 'VCI:' with the value '88', 'Encapsulation type:' with a dropdown menu showing 'LLC', and 'Protocol:' with a dropdown menu showing 'PPPoE'. Below these fields is a green 'Save' button.

3. Open the **System Preferences** and select **Network** panel. It will have a new port called **usbadsli-port**. Select this port.
4. Select PPP tab and enter the account name and password as signed by your ISP as follow.



A screenshot of the 'Network' panel in System Preferences. The 'Location' is set to 'Automatic' and the 'Show' dropdown is set to 'usbadsli-port'. The 'PPP' tab is selected, showing fields for 'Service Provider' (Draytek), 'Telephone Number', 'Alternate Number', 'Account Name' (draytek), and 'Password' (masked with dots). There is a 'Save password' checkbox which is checked, with a note: 'Checking this box allows all users of this computer to access this Internet account without entering a password.' Below these fields is a 'PPP Options...' button. At the bottom, there is a lock icon and the text 'Click the lock to prevent further changes.' and an 'Apply Now' button.

5. Select the Modem tab, and select the Modem script with **DrayTek\_ADSL\_PPP** as follows:



### Connect to the Internet

1. Launch **Internet Connect** application and select **Configuration** with **usbads1-port**.
2. Click the **Connect** button.

### Uninstallation

1. Launch the **Uninstall.pkg** and follow the instruction to uninstall it.
2. Drag the **DSL Kiosk** application to **Trash**.